

# Murgab Earthquake Response Recovery Framework<sup>1</sup>

REACT Tajikistan  
with support from the  
Disaster Risk Management Program, UNDP Tajikistan



Contents	
1. Purpose .....	2
2. Background.....	2
2.1. Damage Overview .....	2
3. Socio-Economic Overview .....	3
4. Reports and Assessments .....	4
5. Recovery Efforts to Date .....	4
6. Recovery Framework.....	5
6.1. Objective.....	5
6.2. Overarching Considerations.....	5
6.3. Climate Considerations.....	5
6.4. Hazard Assessments .....	6
6.5. Environmental Reviews .....	6
6.6. Shelter and Settlements.....	6
6.7. WASH.....	6
6.8. Livelihoods and Access .....	7
6.9. Food Security.....	7
6.10. Education .....	7
6.11. Government Services .....	7
6.12. Health and Health Care .....	7
7. Initial Interventions .....	7
Annex B – Humanitarian Assistance Provided up to 31 May 2016.....	9

Dushanbe  
June, 2016

<sup>1</sup> Drafted by: C. Kelly, Recovery Advisor, DRMP UNDP Tajikistan, [havedisastercallkelly@gmail.com](mailto:havedisastercallkelly@gmail.com).

## 1. Purpose

This **Murgab Earthquake Recovery Framework** provides a guide for recovery from the 2015 Murgab earthquake affecting eastern Tajikistan. The **Framework** incorporates global good practices and is for use by the humanitarian community together with the Government of Tajikistan.

Given the scale of the disaster and stage of recovery efforts, this **Framework** does not provide a detailed recovery plan with specific project summaries (e.g., as defined in the **REACT Recovery Framework**) but identifies key factors to be considered as part of the recovery process.

The **Framework** draws on the **REACT Recovery Framework** and the draft **Government of Tajikistan Recovery Guide**, the Sphere Standards for Humanitarian Assistance and other recovery guidance. Elements of the Framework will be revised as additional information is available.

## 2. Background<sup>4</sup>

### 2.1. Damage Overview

The initial 7.2 Richter scale shock from the Murgab earthquake occurred on 7 December 2015 at 1250 local time with an epicenter 95 km west of Murgab, Gorno Badakhshan Autonomous Oblast (GBAO), Tajikistan (Glide # EQ-2015-000166-TJK). Two persons perished due to the earthquake, with 10 reported injured. Other damage is summarized in **Table 1 – Damage Assessment Information**, at right.

An estimated 862 families (3,830 persons including 448 children 0-15 years old)<sup>5</sup> are reported to be resident in the most affected upper reaches of the Bartang Valley. Other affected households are located in Shughnan, Vanj, Roshtqala and Murgab Districts.<sup>6</sup> In the map below, developed by FOCUS, Bartang Valley is in the center,

<b>Table 1 – Damage Assessment Information</b>				
<b>Sector</b>	<b>Damage Type and Quantity</b>		<b>Source</b>	
Housing	Destroyed	144	<b>REACT Situation Report #6</b> , 21 December 2015. <sup>2</sup> Committee of Emergency Situations (CoES) data.	
	Damaged	516		
Schools	Destroyed	3		
	Damaged	17		
Health Facilities	Destroyed	1		
	Damaged	3		
Hydro-power stations	Damaged	1		
Public Facilities: government offices, libraries, cultural centers	Destroyed	1		<b>MFA Letter 12-10-3539</b> , 14 December 2015
	Damaged	6 <sup>3</sup>		
Telecommunications – fiber optic lines	Damaged	5.4 km		
Irrigation canals	Damaged	1,122 meters		
Livestock	Killed	212		

<sup>2</sup> [http://untj.org/files/Publications/DRMP/Disaster\\_Situation\\_reports/2015/Tajikistan\\_REACT-Murghob\\_earthquake-situation\\_update5-16\\_December\\_2015.pdf](http://untj.org/files/Publications/DRMP/Disaster_Situation_reports/2015/Tajikistan_REACT-Murghob_earthquake-situation_update5-16_December_2015.pdf).

<sup>3</sup> Field assessments indicate the Jamoat office in Basid needs to be replaced due to seismic damage.

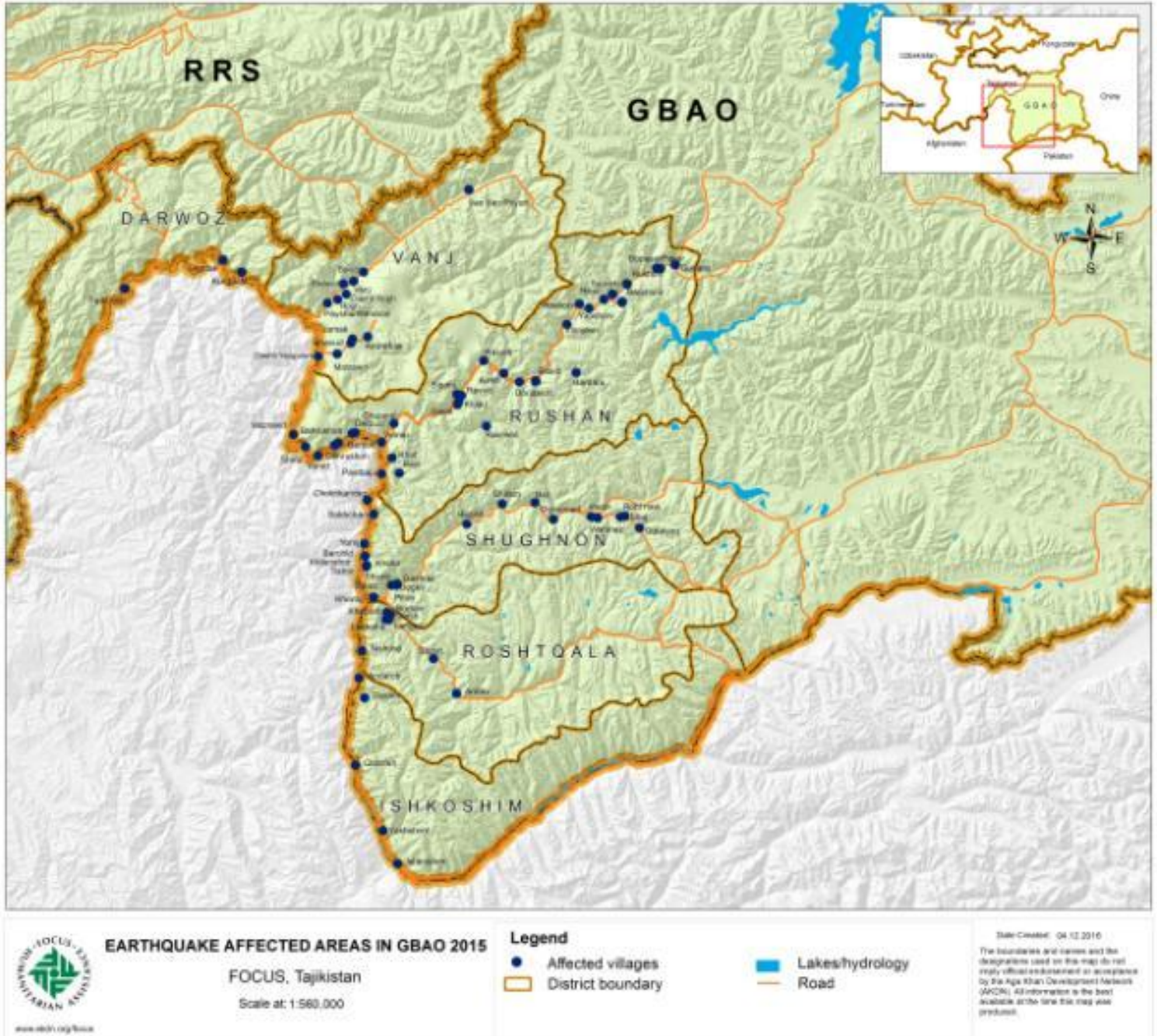
<sup>4</sup> Incorporating information from **REACT Tajikistan Murgab Earthquake Rapid Assessment** [[http://untj.org/index.php?option=com\\_content&view=article&id=131&Itemid=564](http://untj.org/index.php?option=com_content&view=article&id=131&Itemid=564)].

<sup>5</sup> This number excludes registered population who are migrants.

<sup>6</sup> A number of households in Ishkashim District affected by an earthquake in October 2015 have been included in the recovery planning.

running from southwest to northeast, with the greatest number of dots, indicating affected villages (77% of total officially affected).

Some affected populations, particularly in Bartang Valley, were also affected by flooding and mud flows earlier in 2015.



### 3. Socio-Economic Overview

The earthquake-affected area is located in one of the poorer mountainous areas of Tajikistan with difficult access, limited local livelihood opportunities and high rates of labor out migration, which limit labor supplies during most months of the year. The generally lower economic

situation in the affected areas may also be responsible for poorer quality construction and reduced repairs, contributing to seismic damage. The relative isolation and poor roads in the Bartang Valley likely increase transport costs and make access difficult, and particularly so in winter.

#### 4. Reports and Assessments

The most recent reports on the disaster and response are available at [http://untj.org/index.php?option=com\\_flexicontent&view=item&cid=95:disaster-management&id=131:situation-reports](http://untj.org/index.php?option=com_flexicontent&view=item&cid=95:disaster-management&id=131:situation-reports). Additional information is available from **UNICEF Tajikistan Update #4**, available at <http://reliefweb.int/disaster/eq-2015-000166-tjk>.

The Government of Tajikistan conducted a damage assessment immediately following the disaster. Full details of this assessment are not available, but the results are summarized in Table 1, above.

REACT conducted an initial damage and needs assessment from 17 to 21 December 2015. This assessment focused on (1) outstanding immediate relief needs and (2) requirements moving forward to recovery, taking into account the scale of damage and expected weather and other operating conditions in GBAO. The results of this assessment recommended assistance as summarized in the box at right.

An assessment of housing damage has been conducted by FOCUS.<sup>7</sup> The assessment did not cover socio-economic or livelihoods-focused impact. A REACT-managed in depth assessment of affected households, focusing on socio-economic conditions, livelihoods and survivor recover plans and needs should be completed by the end of May.

#### 5. Recovery Efforts to Date

The scale of survivor-driven recovery has not yet been assessed (but should become more evident as part of the recommended in depth assessment). The Government has provided reconstruction aid to affected families.<sup>8</sup> Households rated as having 100% damage have received cement, reinforcing iron, wood, roofing and windows to construct a three room house and 13,000 Somoni (\$US1600) in a cash payment. Households rated as having 50% or more damage have received a payment of 8000 Somoni (\$US 1000) and, in some cases, some construction materials. Detailed information on

##### **REACT December Murgab Earthquake Assistance Recommendations**

*Displaced Populations/Rushan District Center:*

Immediate: Winter clothes and underwear, Winter shoes, Bedding, Infant formula, Washing facilities, Psychosocial support, Fire extinguishers, Stoves and Fuel, Personal hygiene materials and Cooking facilities and equipment.

Longer term needs: Food, Fuel, Upgrading Communal facilities, Asset transfers, Employment, School supplies, Heating support to boarding school and Improved local waste management.

*Disaster-affected in upper Bargang Valley:*

Immediate needs include: Road and Bridge Repair, Winter clothes, underwear and shoes, Bedding, Shelter and stoves, Kerosene, Psychosocial, Personal hygiene materials and Repairing hydroelectric facilities.

Longer term needs: Winter road access, Fuel (coal), Extending loan repayment, Repairs to Public Buildings, Vouchers, Food and Solar Panel equipment. Attention is also required top planning the recovery, recovery funding, risk reduction and building assets.

Adapted from **REACT Tajikistan Murgab Earthquake Rapid Assessment**, [\[http://untj.org/index.php?option=com\\_content&view=article&id=131&Itemid=564\]](http://untj.org/index.php?option=com_content&view=article&id=131&Itemid=564).

<sup>7</sup> The assessment report is under review but should eventually be available for use.

<sup>8</sup> A Government recovery plan has been identified by not reviewed at the time this Framework was developed.

Government recovery plans and assistance has been requested and will be used to update the Framework as needed.

The Government in GBAO also reports that all destroyed/damaged schools and clinics will be replaced/repared, while repairs/replacement of damaged government offices will come later. While earthquake damage to the road in Bartang Valley has been repaired, the Government would like the road to be further upgraded (based on conversation with the Deputy Prime Minister).

Support for limited additional recovery-focused assistance has been requested by some REACT members, but funding is an issue. **Annex A** provided the latest overall listing of relief and recovery assistance provided by REACT partners.

Rebuilding will be owner-driven, at current locations. There is presumption that disaster survivors will be able to undertake their own recovery, having been provided material or financial assistance by the Government and other sources. Training in seismic safe construction is often identified as an outstanding need in relation to owner-driven rebuilding.

Affected communities are responsible for repairing damage to water/irrigation facilities. It is reported that this work is underway, concurrent with development projects to, for instance, improve water or electrical supplies.

## **6. Recovery Framework**

### **6.1. Objective**

The objective of the Murgab Earthquake Recovery Framework is to support survivor-driven recovery which reduces future risk from seismic and climate hazards and considers the limitations imposed by climate conditions, physical isolation and limited wealth in the affected areas. The timeframe for the **Framework** is from May 2016 to May 2017.

### **6.2. Overarching Considerations**

Gender, age-related factors and mental and physical capacity are overarching considerations in the recovery process. Each of these considerations should be reflected in the overall approach to recovery and in specific projects and activities.

The *gender marker* process<sup>9</sup> should be used to assess gender integration at the project level for each recovery effort. Gender, age, and mental and physical capacity should be included as monitoring indicators in recovery projects and reported on regularly.

At this point protection and gender-based violence do not appear to be issues in the affected area. The emergence of these issues over time will be monitored.

### **6.3. Climate Considerations**

Assessments indicate that Tajikistan will become wetter through 2100. Expected impacts include high stream flows during melting, possible increased mud flows and severe weather (e.g., heat waves and severe storms). These expectations should be incorporated into local level recovery planning, for instance in the:

- Repair and reconstruction of buildings (e.g., the potential for more precipitation, including roof water catchment),

---

<sup>9</sup> <https://www.humanitarianresponse.info/en/topics/gender/page/iasc-gender-marker>.

- Location of buildings near flood zones, mud flow or rock fall<sup>10</sup> zones which may be triggered by weather conditions
- Location and construction of roads and paths which could be affected by severe weather including avalanches.

#### **6.4. Hazard Assessments**

All physical recovery work should be compared against existing hazard maps to (1) reduce the new construction in hazardous locations and (2) move or otherwise protect existing buildings and human use areas from identified hazards. These hazard maps are available from FOCUS Humanitarian Assistance.

#### **6.5. Environmental Reviews**

All recovery projects should use the *environment marker*<sup>11</sup> to assess possible negative environmental impacts. More in depth assessment of environmental impacts may be required by specific donors, and all projects should meet legal requirements for environmental reviews and approvals.

#### **6.6. Shelter and Settlements**

The first priority for recovery is rebuilding shelter and basic services in settlements<sup>12</sup> to assure minimum human rights and health and safety requirements are met for the affected population considering the climate and hazard prone nature of the affected areas.

The Government has indicated that shelter reconstruction will be owner-driven, with the Government providing some construction materials and financial support (see above). The Government support likely needs to be complemented by funding (grants or loans), commodities (e.g., food aid, construction materials) and labor to assure that all affected households can rebuild as quickly as possible.

Training and mentoring on seismic safe construction is required. To the extent possible, reconstructed shelter should be based on the typical “Pamir” house design, incorporating seismic risk reduction measures identified through the FOCUS housing damage assessment and other guidance (e.g., available from Habitat for Humanity).

Damaged government or public facilities in affected communities (see Table 1) should be returned to minimal safe functioning by the end of the summer, 2016, to assure basic human rights and health and safety by the coming winter. Where buildings need to be replaced, these need to be constructed in a seismically safe manner.

#### **6.7. WASH<sup>13</sup>**

Information currently available does not indicate damage to water supplies, which has prevented normal minimal access, while damage to latrines has been reported. Where possible, recovery efforts should ensure that the level of WASH services available to disaster survivors

<sup>10</sup> There is evidence which suggests that rock falls in Bartang Valley can be triggered by high precipitation.

<sup>11</sup> <https://www.humanitarianresponse.info/en/topics/environment/document/environment-marker-guidance>.

<sup>12</sup> “Settlements” refers to the package of services and facilities needed for normal life in a location. It includes shelter, water, sanitation and other services as well as livelihoods and social systems.

<sup>13</sup> UNICEF deployed an expert as part of their response to the earthquake. Information from this support will be used to update this part of the Framework if needed.

meets minimal standards (e.g., Sphere Standards for Humanitarian Assistance) and also incorporate risk reduction. Specific attention is needed to repair/upgrading to minimum standards latrines in schools and health facilities.

### **6.8. Livelihoods and Access**

The livelihoods of the affected households appear to be a combination of farming, herding, small scale enterprise (e.g., trade, small stores, weaving, etc.), local wage or barter labor and migration. Livelihoods for the most affected Bartang Valley appear to be considerably constrained by poor access to markets and finance institutions, and limited opportunities for non-farm/herding income generation. However, most of the affected area, including parts of Bartang Valley, has cell phone service and, in places, internet access as well as television reception and could be considered to have good access to the virtual world.

### **6.9. Food Security**

The core of the affected area, Bartang Valley, is considered relatively food insecure with a high reliance on purchases to cover food needs. In other areas, for instance, near Khorog, households may primarily depend on purchases to cover food needs. Diet diversity appears to decrease with elevation and access to the main road along the Panj river.

Typically, the earthquake resulted in the loss of food stocks, principally potatoes and other vegetables, due to the commodities being frozen before they could be removed from the cold temperatures being able to enter damaged houses.

Because food production in many of the affected areas is dependent on a short growing season and limited arable lands, monitoring food security is required with the scale of any food aid to address food gaps (particularly for the coming winter) dependent on both seasonal production and income available to purchase food stocks.

### **6.10. Education**

Damage reports indicate 20 school facilities damaged or destroyed. As most of the damaged facilities could be considered as at risk from further seismic impacts, the scale of recovery efforts in the education can be considered significant. There is a need to both assure adequate temporary school facilities and adequate repairs to damaged buildings and safe construction for new buildings. Of note is that FOCUS has done school seismic retrofitting in the region and is a source of advice and guidance for repair work, which should include risk reduction.

### **6.11. Government Services**

Some government offices, particularly in Basid (Bartang Valley), were damaged or destroyed. The impact of this damage on the delivery of government services needs to be assessed and repairs or replacement needs to be planned to ensure normal government services are available to support the recovery process over the coming year.

### **6.12. Health and Health Care**

Apart from a few injured persons, health and health care does not appear to have been affected by the disaster or require specific recovery interventions apart from construction of a new health facility and repairs to the damage of another.

## **7. Initial Interventions**

The following list of interventions has been identified as necessary to move forward the recovery process in the affected areas. The list takes into account that this **Framework** was developed

approximately five months after the December disaster and recognizes that recovery efforts, by the Government, humanitarian community and disaster survivors, are already underway. The interventions listed below should be integrated into on-going recovery efforts.

- **Conduct an in depth assessment** to better understand the impact of the disaster on survivors and recovery needs and options.
- **Identify unmet needs**, through the in depth assessment as well as coordination meetings and REACT-Government communications, e.g., on progress on implementing recovery plans.
- **Identify additional recovery-related assistance** being provided, particularly from non-traditional or newly active sources.
- **Identify further recovery support options** in the shelter/settlements, WASH, food security and education sectors, formulate these into a recovery plan<sup>14</sup>, and develop specific interventions as needed.
- **Establish an information sharing mechanism** to document recovery assistance provided, planned and needed (i.e., gaps analysis) through May 2017. Disaster recovery generally takes at least two years. The beginning of the next growing season provides a convenient end point for current or newly identified external support and an exit point to developmental programming.
- **Define risk reduction options** for the affected areas, for earthquakes, landslides, floods, rock falls and muds flows, and incorporate them into the recovery plan.
- **Support livelihoods options** which facilitate recovery and build resilience.
- **Integrate ecosystem DRR/Climate based Adaptation (CbA)** into all interventions to address climate and environmental challenges in the impacted areas.
- **Plan a programmatic recovery program review** in June 2017, including input from the disaster survivors and other stakeholders.

---

<sup>14</sup> This plan can be an amendment to this Framework.



**Annex B – Humanitarian Assistance Provided up to 31 May 2016.**

<b>Distribution of Relief Items (as of 31 May 2016)</b>							
<b>Agency</b>	<b>Relief items</b>	<b>Quantity</b>	<b>Unit</b>	<b>District</b>	<b>Jamoat</b>	<b>Status</b>	<b>Date items reached population</b>
WFP	Wheat Flour	10.56	MT	Rushan	IDPs in Rushan center and Barrushan Jamoats of Rushan district	Delivered	18-Dec-15
WFP	Vegetable Oil	0.397	MT	Rushan	IDPs in Rushan center and Barrushan Jamoats of Rushan district	Delivered	18-Dec-15
WFP	Salt	0.132	MT	Rushan	IDPs in Rushan center and Barrushan Jamoats of Rushan district	Delivered	18-Dec-15
WFP	Pulses	1.055	MT	Rushan	IDPs in Rushan center and Barrushan Jamoats of Rushan district	Delivered	18-Dec-15
WFP	Stoves	12	Pcs	Rushan	IDPs in Rushan center and Barrushan Jamoats of Rushan district	Delivered	18-Dec-15
WFP	Super Cereal Plus	1.196	MT	Rushan	IDPs in Rushan center and Barrushan Jamoats of Rushan district	Delivered	12-Feb-16
WFP	Wheat Flour	8.424	MT	Shugnan	Vankala, ver, Navobod, Sushan, Shanbozov, Porshinev, Shirinjonov – total 26 villages	Delivered	28-Dec-15

WFP	Vegetable Oil	0.316	MT	Shugnan	Vankala, ver, Navobod, Sushan, Shanbozov, Porshinev, Shirinjonov	Delivered	28-Dec-15
WFP	Salt	0.105	MT	Shugnan	Vankala, ver, Navobod, Sushan, Shanbozov, Porshinev, Shirinjonov	Delivered	28-Dec-15
WFP	Pulses	0.842	MT	Shugnan	Vankala, ver, Navobod, Sushan, Shanbozov, Porshinev, Shirinjonov	Delivered	28-Dec-15
WFP	Super Cereal Plus	0.64	MT	Shugnan	Vankala, ver, Navobod, Sushan, Shanbozov, Porshinev, Shirinjonov		11-Feb-16
WFP	Wheat Flour	4.608	MT	Vanj	M. Abdulloev, Rovand, Vodkhud, Yazgulom – total 16 villages	Delivered	30-Dec-15
WFP	Vegetable Oil	0.173	MT	Vanj	M. Abdulloev, Rovand, Vodkhud, Yazgulom	Delivered	30-Dec-15
WFP	Salt	0.058	MT	Vanj	M. Abdulloev, Rovand, Vodkhud, Yazgulom	Delivered	30-Dec-15
WFP	Pulses	0.461	MT	Vanj	M. Abdulloev, Rovand, Vodkhud, Yazgulom	Delivered	30-Dec-15
WFP	Super Cereal Plus	0.328	MT	Vanj	M. Abdulloev, Rovand, Vodkhud, Yazgulom	Delivered	13-Feb-16
WFP	Wheat Flour	22.872	MT	Rushan	Basid, Bartang, Pastkhuf, Rushon, Abdulvosiev, Dodikhudoev – total 28 villages	Delivered	7-Jan-16

WFP	Vegetable Oil	0.8577	MT	Rushan	Basid, Bartang, Pastkhuf, Rushon, Abdulvosiev, Dodikhudoev	Delivered	7-Jan-16
WFP	Salt	0.2859	MT	Rushan	Basid, Bartang, Pastkhuf, Rushon, Abdulvosiev, Dodikhudoev	Delivered	7-Jan-16
WFP	Pulses	2.2872	MT	Rushan	Basid, Bartang, Pastkhuf, Rushon, Abdulvosiev, Dodikhudoev	Delivered	7-Jan-16
WFP	Super Cereal Plus	5.352	MT	Rushan	Basid, Bartang, Pastkhuf, Rushon, Abdulvosiev, Dodikhudoev	Delivered	12-Feb-16
UNICEF/ FOCUS	Hygiene kit, adult	500	pcs	Rushan	Rushan, N. Dodikhudoev, Basid, Savnob	Delivered	Jan - Feb 2016
UNICEF / FOCUS	Medical supplies IEHK2011,kit,basic unit	11	set	Rushan	Rushan, N. Dodikhudoev, Basid, Savnob	Delivered	Jan - Feb 2016
UNICEF / FOCUS	Bed linen Set Baby 1.3x0.9m	265	set	Rushan	Rushan, N. Dodikhudoev, Basid, Savnob	Delivered	Jan - Feb 2016
UNICEF / FOCUS	Bed linen Set Adult 1.5x2m	432	set	Rushan	Rushan, N. Dodikhudoev, Basid, Savnob	Delivered	Jan - Feb 2016
UNICEF / FOCUS	Water-cont,LDPE,collapsible,20l,1.3m tst	500	pcs	Rushan	Rushan, N. Dodikhudoev, Basid, Savnob	Delivered	Jan - Feb 2016
UNICEF / FOCUS	Water cont, PVC/PE,collapsible , 10l,1m tst	500	pcs	Rushan	Rushan, N. Dodikhudoev, Basid, Savnob	Delivered	Jan - Feb 2016
UNICEF / FOCUS	Blanket,cotton,baby,90 x 130cm	718	pcs	Rushan	Rushan, N. Dodikhudoev, Basid, Savnob	Delivered	Jan - Feb 2016

UNICEF / FOCUS	Blanket,wool-blend,150 x 200cm	980	pcs	Rushan	Rushan, N. Dodikhudoev, Basid, Savnob	Delivered	Jan - Feb 2016
UNICEF / FOCUS	Bucket, hard plastic, w/lid,100L	100	pcs	Rushan	Rushan, N. Dodikhudoev	Delivered	Jan - Feb 2016
UNICEF / FOCUS	Household Emergency Assistance Package	584	set	Rushan	Rushan, N. Dodikhudoev, Basid, Savnob	Delivered	Jan - Feb 2016
UNICEF / FOCUS	Water tank,collapsible,1500l,w/distr.kit	10	pcs	Rushan	Savnob	Delivered	Jan - Feb 2016
UNICEF / FOCUS	Tarpaulin,plastic,roll,4x50m	2	pcs	Rushan	Rushan	Delivered	Jan - Feb 2016
UNICEF / FOCUS	Water purif. (NaDCC) 33mg tabs/PAC-50	2000	pcs	Rushan	Rushan, N. Dodikhudoev, Basid, Savnob	Delivered	Jan - Feb 2016
OXFAM / FOCUS	Jackets(boys)	208	pcs	Rushan	Rushan, N. Dodikhudoev, Savnob	Delivered	Jan - Feb 2016
OXFAM / FOCUS	Jackets(girls)	216	pcs	Rushan	Rushan, N. Dodikhudoev, Savnob	Delivered	Jan - Feb 2016
OXFAM / FOCUS	Hats(boys)	416	pcs	Rushan	Rushan, N. Dodikhudoev, Basid, Savnob	Delivered	Jan - Feb 2016
OXFAM / FOCUS	Hats(girls)	432	pcs	Rushan	Rushan, N. Dodikhudoev, Basid, Savnob	Delivered	Jan - Feb 2016
OXFAM / FOCUS	Winter trousers(girls)	432	pair	Rushan	Rushan, N. Dodikhudoev, Basid, Savnob	Delivered	Jan - Feb 2016

OXFAM / FOCUS	Winter trousers(boys)	416	pair	Rushan	Rushan, N. Dodikhudoev, Basid, Savnob	Delivered	Jan - Feb 2016
OXFAM / FOCUS	Winter socks (men)	2290	pair	Rushan	Rushan, N. Dodikhudoev, Basid, Savnob	Delivered	Jan - Feb 2016
OXFAM / FOCUS	Winter socks(women)	2245	pair	Rushan	Rushan, N. Dodikhudoev, Basid, Savnob	Delivered	Jan - Feb 2016
OXFAM / FOCUS	Winter socks(boys)	1040	pair	Rushan	Rushan, N. Dodikhudoev, Basid, Savnob	Delivered	Jan - Feb 2016
OXFAM / FOCUS	Winter socks(girls)	1080	pair	Rushan	Rushan, N. Dodikhudoev, Basid, Savnob	Delivered	Jan - Feb 2016
OXFAM / FOCUS	Warm winter Blankets	1331	pcs	Rushan	Rushan, N. Dodikhudoev, Basid, Savnob	Delivered	Jan - Feb 2016
TCELL / FOCUS	Accumulator batteries 74 Ah 12 v 700A (EN)	41	pcs	Rushan	Savnob	Delivered	February 2016
BEELINE/FOCUS	Thermos 3,2 liter	60	Pcs	Rushan	Rushan, N. Dodikhudoev	Delivered	February 2016
IOM / FOCUS	Warm (thick) linoleum	1020	m2	Rushan	Rushan, N. Dodikhudoev	Delivered	February 2016
IOM / FOCUS	Carpet( 2x3m)	50	pcs	Rushan	Rushan, N. Dodikhudoev	Delivered	February 2016
FOCUS	Industrial Stove for Boarding School	1	pcs	Rushan	Rushan	Delivered	December 2015
FOCUS	Ovens and Stove sets for the IDP Locations	9	pcs	Rushan	Rushan, N. Dodikhudoev	Delivered	December 2015
FOCUS / SDC	Yurts	16	pcs	Rushan	Savnob	Delivered	January 2016

FOCUS	Ruberoid	43	pack	Rushan	Savnob	Delivered	February 2016
FOCUS / SDC	Kovralin	325	meter	Rushan	Savnob	Delivered	February 2016
FOCUS / SDC	Isolation tape 0,5 mm	350	meter	Rushan	Savnob	Delivered	February 2016
FOCUS	Isolation tape 0,3mm	200	meter	Rushan	Savnob	Delivered	February 2016
FOCUS	Rope	416	meter	Rushan	Savnob	Delivered	February 2016
FOCUS	Iron sheet 1x1m	52	pcs	Rushan	Savnob	Delivered	February 2016
FOCUS	Big nails	104	pcs	Rushan	Savnob	Delivered	February 2016
FOCUS	Cord	26	pcs	Rushan	Savnob	Delivered	February 2016
FOCUS / SDC	Stove for yurts	26	pcs	Rushan	Savnob	Delivered	February 2016
FOCUS	Torches Battery	410	pcs	Rushan	Savnob	Delivered	December 2015
FOCUS	Accumulator Battery for CODAN Radio	3	pcs	Rushan	Savnob	Delivered	December 2015
FOCUS	Stove set	105	pcs	Rushan	Rushan	Delivered	December 2015
FOCUS	Dry Milk	1000	kg	Rushan	Rushan	Delivered	December 2015
FOCUS	Wash basins	100	pcs	Rushan	Rushan	Delivered	December 2015
FOCUS	Electric heater	11	pcs	Rushan	Rushan	Delivered	December 2015
FOCUS	Plastic ladle	100	pcs	Rushan	Rushan	Delivered	December 2015
FOCUS	Bed with mattress	15	pcs	Rushan	Rushan	Delivered	December 2015
FOCUS	Mattress	15	pcs	Rushan	N. Dodikhudoev	Delivered	December 2015
FOCUS	Cauldron	19	pcs	Rushan	N. Dodikhudoev	Delivered	December 2015
FOCUS	Eaves board 50 mm	1	M3	Rushan	N. Dodikhudoev	Delivered	December 2015
FOCUS	Eaves board 30 mm	0.5	M3	Rushan	N. Dodikhudoev	Delivered	December 2015
FOCUS	Beams - 5m	0.4	M3	Rushan	N. Dodikhudoev	Delivered	December 2015
FOCUS	Beams - 3m	0.4	M3	Rushan	N. Dodikhudoev	Delivered	December 2015
FOCUS	Nail 100mm	3	Kg	Rushan	N. Dodikhudoev	Delivered	December 2015
FOCUS	Nail 120mm	2	Kg	Rushan	N. Dodikhudoev	Delivered	December 2015

FOCUS	Screw driver	4	Kg	Rushan	N. Dodikhudoev	Delivered	December 2015
FOCUS	Cement	2700	Kg	Rushan	N. Dodikhudoev	Delivered	December 2015
FOCUS	Tents	128	Pcs	Rushan	Savnob	Delivered	March 2016
UNICEF /FOCUS	Cement M400	10,950	Kg	Rushan	N.Dodikhudoev, Rushon	Delivered	March – Apr 2016
UNICEF /FOCUS	Door 2,0x0,7m	27	Pcs	Rushan	N.Dodikhudoev, Rushon	Delivered	March – Apr 2016
UNICEF /FOCUS	Reinforcing iron12mm	560	m	Rushan	N.Dodikhudoev, Rushon	Delivered	March – Apr 2016
UNICEF /FOCUS	Wire d 3mm	28	kg	Rushan	N.Dodikhudoev, Rushon	Delivered	March – Apr 2016
UNICEF /FOCUS	Sheet metal 0,9m*2.0 m	53	pcs	Rushan	N.Dodikhudoev, Rushon	Delivered	March – Apr 2016
UNICEF /FOCUS	Nails # 100	5.3	kg	Rushan	N.Dodikhudoev, Rushon	Delivered	March – Apr 2016
UNICEF /FOCUS	Nails # 80	13	kg	Rushan	N.Dodikhudoev, Rushon	Delivered	March – Apr 2016
UNICEF /FOCUS	Nails # 70	5.3	kg	Rushan	N.Dodikhudoev, Rushon	Delivered	March – Apr 2016
UNICEF /FOCUS	Lime	55	kg	Rushan	N.Dodikhudoev, Rushon	Delivered	March – Apr 2016
UNICEF /FOCUS	White enamel	27	litre	Rushan	N.Dodikhudoev, Rushon	Delivered	March – Apr 2016
UNICEF /FOCUS	Kohler pasta 100 ml	54	bottle	Rushan	N.Dodikhudoev, Rushon	Delivered	March – Apr 2016
UNICEF / FOCUS	Installation foam	27	bottle	Rushan	N.Dodikhudoev, Rushon	Delivered	March – Apr 2016
UNICEF / FOCUS	Net for insects (mosquitoes & flies)	12.5	rm	Rushan	N.Dodikhudoev,Rushon	Delivered	March – Apr 2016
UNICEF / FOCUS	Door handle	27	pcs	Rushan	N.Dodikhudoev,Rushon	Delivered	March – Apr 2016

UNICEF / FOCUS	Framework 0.15*0.05 m*126m	21	pcs	Rushan	N.Dodikhudoev,Rushon	Delivered	March – Apr 2016
UNICEF / FOCUS	Deflector d 110 mm	25	pcs	Rushan	N.Dodikhudoev,Rushon	Delivered	March – Apr 2016
UNICEF / FOCUS	Board for encasement of foundation and floor 0,1*0,05*6m	561	pcs	Rushan	N.Dodikhudoev,Rushon	Delivered	March – Apr 2016
UNICEF / FOCUS	Shower drain fitting 3.175 cm	2	pcs	Rushan	N.Dodikhudoev,Rushon	Delivered	March – Apr 2016
UNICEF / FOCUS	Water heater Thermex 100 lit	18	pcs	Rushan	N.Dodikhudoev,Rushon	Delivered	March – Apr 2016
UNICEF / FOCUS	Wiring for thermex d 4 mm 2 kw	20	m	Rushan	N.Dodikhudoev,Rushon	Delivered	March – Apr 2016
UNICEF / FOCUS	Monotop Shower mixer 30 cm pourer	16	pcs	Rushan	N.Dodikhudoev,Rushon	Delivered	March – Apr 2016
UNICEF / FOCUS	Monotop Shower mixer 30 cm curved	4	pcs	Rushan	N.Dodikhudoev,Rushon	Delivered	March – Apr 2016
UNICEF / FOCUS	Ceramic toilet, standard, high with lid Flushing - by pulling handle on flushing tank	4	pcs	Rushan	N.Dodikhudoev,Rushon	Delivered	March – Apr 2016
UNICEF / FOCUS	Bucket hard with plastic lid,100 L	64	pcs	Rushan	N.Dodikhudoev,Rushon, Savnob Basid	Delivered	31 March 2016
UNICEF / FOCUS	Dishwashing liquid 500 ml	70	bottle	Rushan	N.Dodikhudoev,Rushon, Savnob Basid	Delivered	31 March 2016



UNICEF / FOCUS	Bleach liquid 1 L	140	bottle	Rushan	N.Dodikhudoev,Rushon, Savnob Basid	Delivered	31 March 2016
FOCUS	Water paint	147	kg	Rushan	N.Dodikhudoev, Rushon	Delivered	30-31 Jan 2016
FOCUS	Roller	35	pcs	Rushan	N.Dodikhudoev, Rushon	Delivered	30-31 Jan 2016
FOCUS	Painting brush	34	pcs	Rushan	N.Dodikhudoev, Rushon	Delivered	30-31 Jan 2016
FOCUS	Plastic basin for color	30	pcs	Rushan	N.Dodikhudoev, Rushon	Delivered	30-31 Jan 2016
FOCUS	Door metallic	2	pcs	Rushan	N.Dodikhudoev, Rushon	Delivered	30-31 Jan 2016
FOCUS	Screw 120 mm	0.3	kg	Rushan	N.Dodikhudoev, Rushon	Delivered	30-31 Jan 2016
FOCUS	Plastic sheet	36	sq.m	Rushan	N.Dodikhudoev, Rushon	Delivered	30-31 Jan 2016
FOCUS	Corrugated sheet	30	sq.m	Rushan	N.Dodikhudoev, Rushon	Delivered	30-31 Jan 2016
FOCUS	Plasterwork (Rotband)	1516	kg	Rushan	N.Dodikhudoev, Rushon	Delivered	30-31 Jan 2016
FOCUS	Carpet (Kovrolin)	150	sq.m	Rushan	Rushan	Delivered	
FOCUS	Plywood	21	sq.m	Rushan	N.Dodikhudoev,Rushon	Delivered	30-31 Jan 2016
FOCUS	Furniture plywood	185	sq.m	Rushan	N.Dodikhudoev,Rushon	Delivered	30-31 Jan 2016
FOCUS	Door handle	90	pcs	Rushan	N.Dodikhudoev,Rushon	Delivered	30-31 Jan 2016
FOCUS	Nail 3mm	10	kg	Rushan	N.Dodikhudoev,Rushon	Delivered	30-31 Jan 2016
FOCUS	Nail 100mm	9	kg	Rushan	N.Dodikhudoev,Rushon	Delivered	30-31 Jan 2016
FOCUS	Nail 150mm	4	kg	Rushan	N.Dodikhudoev,Rushon	Delivered	30-31 Jan 2016
FOCUS	Nail for roof	30	kg	Rushan	N.Dodikhudoev,Rushon	Delivered	30-31 Jan 2016

FOCUS	Batten 0.03x0.05	154	m	Rushan	N.Dodikhudoev,Rushon	Delivered	30-31 Jan 2016
FOCUS	Batten 0.05x0.05	99	m	Rushan	N.Dodikhudoev,Rushon	Delivered	30-31 Jan 2016
FOCUS	Glass	33	sq.m	Rushan	N.Dodikhudoev,Rushon	Delivered	30-31 Jan 2016
FOCUS	Socket	20	pcs	Rushan	N.Dodikhudoev,Rushon	Delivered	30-31 Jan 2016
FOCUS	Switch	7	pcs	Rushan	N.Dodikhudoev,Rushon	Delivered	30-31 Jan 2016
FOCUS	Lamp holder	12	pcs	Rushan	N.Dodikhudoev,Rushon	Delivered	30-31 Jan 2016
FOCUS	Ceiling lamp	16	pcs	Rushan	N.Dodikhudoev,Rushon	Delivered	30-31 Jan 2016
FOCUS	Wire 2x4	145	m	Rushan	N.Dodikhudoev,Rushon	Delivered	30-31 Jan 2016
FOCUS	Tape	3	pcs	Rushan	N.Dodikhudoev,Rushon	Delivered	30-31 Jan 2016
FOCUS	Cable 2x6	115	m	Rushan	N.Dodikhudoev,Rushon	Delivered	30-31 Jan 2016
FOCUS	Framework 0.2*0.2 x6m	8	pcs	Rushan	N.Dodikhudoev,Rushon	Delivered	30-31 Jan 2016
FOCUS	Framework 0.05x0.15x6m	2	pcs	Rushan	N.Dodikhudoev,Rushon	Delivered	30-31 Jan 2016
FOCUS	Linoleum	181	m	Rushan	N.Dodikhudoev,Rushon	Delivered	30-31 Jan 2016
FOCUS	Bight	7	pcs	Rushan	N.Dodikhudoev,Rushon	Delivered	30-31 Jan 2016
FOCUS	Framework 0.05x0.15 x6	12	pcs	Rushan	N.Dodikhudoev,Rushon	Delivered	30-31 Jan 2016
FOCUS	Glass cutter	3	pcs	Rushan	N.Dodikhudoev,Rushon	Delivered	30-31 Jan 2016
FOCUS	Spatula	28	pcs	Rushan	N.Dodikhudoev,Rushon	Delivered	30-31 Jan 2016
FOCUS	Wooden advancement plank	84	m	Rushan	Rushan	Delivered	30-31 Jan 2016

Good Neighbors Tajikistan & Korean Embassy in Tajikistan	Clothes	3145	pcs	Rushan	N.Dodikhudoev, Rushon, Bartang Basid, Savnob	Delivered	Dec 2015 - Jan 2016
Good Neighbors Tajikistan & Korean Embassy in Tajikistan	Kitchen sets	631	pcs	Rushan	N.Dodikhudoev, Rushon, Bartang Basid, Savnob	Delivered	Dec 2015 - Jan 2016
Good Neighbors Tajikistan & Korean Embassy in Tajikistan	Food (Powdered Milk)	1500	kg	Rushan	N.Dodikhudoev, Rushon, Bartang Basid, Savnob	Delivered	Dec 2015 - Jan 2016
RCST/IFRC/DREF	Hygiene kits	195	Kits	Rushan	Nazarshoev, center of Rushon, Shidz	Delivered	Dec 2015 - Jan 2016
RCST/IFRC/DREF	Kitchen sets	195	Sets	Rushan	Nazarshoev, center of Rushon, Shidz	Delivered	Dec 2015 - Jan 2016
RCST/IFRC/DREF	Matrasses	780	pcs	Rushan	Nazarshoev, center of Rushon, Shidz	Delivered	Dec 2015 - Jan 2016
RCST/IFRC/DREF	Blankets	780	pcs	Rushan	Nazarshoev, center of Rushon, Shidz	Delivered	Dec 2015 - Jan 2016
RCST/IFRC/DREF	Bed linen	780	pcs	Rushan	Nazarshoev, center of Rushon, Shidz	Delivered	Dec 2015 - Jan 2016
RCST/IFRC/DREF	Water cans 10 ltr	195	pcs	Rushan	Nazarshoev, center of Rushon, Shidz	Delivered	Dec 2015 - Jan 2016
RCST/IFRC/DREF	Food Parcel	195	boxes	Rushan	Nazarshoev, center of Rushon, Shidz	Delivered	Dec 2015 - Jan 2016

RCST / German RC	Food Parcel	40	boxes	Rushan	Nazarshoev, center of Rushon, Shidz	Delivered	Dec 2015 - Jan 2016
RCST / King Salman Relief Agency, Saudi Arabia	Food Parcel	1500	Baskets	Rushan	Nazarshoev, center of Rushon, Shidz	Delivered	Dec 2015 - Jan 2016
RCST / King Salman Relief Agency, Saudi Arabia	Coal	90	tones	Rushan	Nazarshoev, center of Rushon, Shidz	Delivered	Dec 2015 - Jan 2016
RCST / King Salman Relief Agency, Saudi Arabia	Heating Stove	1500	pcs	Rushan	Nazarshoev, center of Rushon, Shidz	Delivered	Dec 2015 - Jan 2016
RCST / King Salman Relief Agency, Saudi Arabia	Blankets	7500	pcs	Rushan	Nazarshoev, center of Rushon, Shidz	Delivered	Dec 2015 - Jan 2016
UNDP OCHA funding	Coal	297	MT	Rushan, Shugnan, Vanj	Rushon, N. Dodkhudoev, Savnob, Basid, Bartang, Vankala, Ver, Suchon, Garibsho Shahbozov Porshinev, Mirzojon Shirinjonov, Mahmadullo Abdullo, Rovand, Vodkhud, Yazgulom	Delivered	27 Dec 2015 - 20 Jan 2016
UNDP OCHA funding	Aviation fuel	22	MT	Rushan	Savnob, Basid, Bartang	Delivered	4 March 2016
USAID/FOCUS	Yurts	10	pcs	Rushan	Savnob	Delivered	Feb.2016
USAID/FOCUS	Cash grants	75,000	USD	Rushan	Savnob – 152 households	Delivered	March 2016